



INDUSTRIAL

## AXIOM INDUSTRIAL

### INDUSTRIAL CONTROL GEAR

The Axiom Industrial range of 4 Pole Rotary Isolators includes 415v moulded & sheet steel units from 25 up to 125Amp, plus 32 & 63Amp Heavy Duty die cast aluminium options. Enclosures have 2 knockouts on either side & come with a pad-lock facility. Products are IP65 rated, UKCA, CE IEC 947 & BS EN60947 approved.

The Axiom Industrial range has a wide spread of products from control gear, to HRC fuses, contactors, DOL starters, thermal overloads and industrial plugs and sockets. Within control gear there are 4 pole 415v rotary isolators in either moulded or steel enclosures, switch disconnectors and switch fuses each with five variants from 20A up to 160A and metal switch isolators from 32A to 100A. And soon the Axiom industrial range will be boosted with the introduction of 3 phase boards.

Product Focus – our industrial switch isolators & switch fuses are a competitive retrofit replacement for some of the most recognised and best-selling brands in the UK and internationally.

We have a team of friendly, experienced and dedicated personnel ready to provide you with a high quality service.

We continue to trade solely through the electrical wholesale trade, and we would like to remind our customers should you require any help or assistance, our dedicated sales staff will be glad to help.



We now have Price List 22 available in Excel format for customers who require it to update databases etc. Please contact us for your copy.



Information: All information shown in this catalogue is correct at time of going to press, however we reserve the right to alter or amend the data without prior notice. If you are in doubt please ask our sales team for assistance before ordering.



Suitable for use in commercial & industrial environments

## SWITCHES

Rotary Isolator Moulded - 4 Pole 415v (IP65)

- BS EN60947 IEC947-1-3, CSA, RU, UL, UKCA, CE
- 4 Pole IP65 (weather proof) 440V - 50Hz ABS polycarbonate enclosure
- Padlock facility to prevent the switch being used by unauthorised persons
- Knockouts - 2 on each side  
20mm for 25Amp/32Amp  
25mm for 40Amp/63Amp
- Colour - Handle Red/Yellow for main emergency switch  
Enclosure - Dark Grey  
Body - Light Grey



RS254

RS324

RS404

RS634

RS1004

RS1254

### Rotary Isolator Moulded - 4 Pole 415v (IP65) Approved "UKCA, CE" IEC947 BSEN

Code	Description	Poles	Amps	Voltage	Ingress Protection	Knockouts	Dimensions HxWxD (mm)	Fixing Centre HxWxD (mm)	Min/Box
RS254	25Amp 4P 11kW 415v	4	25A	415v	IP65	2 x 20	125 x 100 x 102	80 x 25	1/36
RS324	32Amp 4P 15kW 415v	4	32A	415v	IP65	2 x 20	125 x 100 x 102	107 x 86	1/36
RS404	40Amp 4P 18.5kW 415v	4	40A	415v	IP65	2 x 25	175 x 125 x 122	107 x 86	1/20
RS634	63Amp 4P 30kW 415v	4	63A	415v	IP65	2 x 25	175 x 125 x 122	107 x 86	1/20
RS804	80A Rotary Isolator 4P 415v	4	80A	415v	IP65	2 x 25	280 x 190 x 125	168 x 258	1/10
RS1004	100Amp 4P 415v Moulded	4	100A	415v	IP65	2 x 25	280 x 190 x 125	168 x 258	1/10
RS1254	125Amp Rotary Isolator 4P 415v	4	125A	415v	IP65	2 x 25	280 x 190 x 125	168 x 258	1/10

## SWITCHES

### Metal Switch Isolator 32Amp TPN



Code: **S32TPN**

Switch 32Amp TPN 4 Pole

- 4 Pole IP65 (weather proof) 440V - 50Hz ABS polycarbonate enclosure
- Padlock facility to prevent the switch being used by unauthorised person
- Knockouts - 6 x 20mm
- Standards & Approvals - BS EN60947, IEC947-1-3, CSA, RU, UL, UKCA, CE
- Construction - Steel / Weight - 666g

Dimensions (mm)  
115 x 135 x 40mm

Minimum / Box quantity: 1/10  
Minimum order quantity: 1

## ISOLATORS

### Heavy Duty Rotary Isolator Enclosures 415v (IP65)

Suitable for use in  
commercial & industrial environments



Dimensions (mm)  
150 x 140 x 100mm  
Fixing Centre (mm)  
80 x 25mm

Code: **RS324HD**

32A 4P Heavy Duty Diecast Rotary Isolator

- Handle Red/Yellow for main emergency switch,
- Enclosure - Dark Grey, Body - Light Grey
- Number of Knockouts - 2 x 20mm / Poles - 4
- Construction - Aluminium / Weight - 1.3Kg

Minimum / Box quantity: 1/12  
Minimum order quantity: 1



Dimensions (mm)  
150 x 140 x 100mm  
Fixing Centre (mm)  
130 x 120mm

Code: **RS634HD**

63A 4P Heavy Duty Diecast Rotary Isolator

- Handle Red/Yellow for main emergency switch,
- Enclosure - Dark Grey, Body - Light Grey
- Number of Knockouts - 2 x 20mm / Poles - 4
- Construction - Aluminium / Weight - 1.3Kg

Minimum / Box quantity: 1/12  
Minimum order quantity: 1



Suitable for use in commercial & industrial environments

## SWITCHES

### Rotary Isolator Enclosures 415v (IP54)

- BS EN60947 IEC947-1-3, CSA, RU, UL, UKCA, CE
- 4 Pole (weather proof) 440v - 50Hz steel enclosure
- Padlock facility to lock in "off position" preventing the switch being used by unauthorised persons
- Knockouts - 2 on each side  
20mm for 25Amp/32Amp  
25mm for 40Amp/63Amp
- Colour - Handle Red/Yellow for main emergency switch  
Enclosure - Dark Grey  
Body - Light Grey



RS254SE

RS324SE

RS404SE

RS634SE

RS1004SE

RS1254SE

### Rotary Isolator Enclosures 415v (IP54)

Code	Description	Poles	Amps	Voltage	Ingress Protection	Dimensions HxWxD (mm)	Fixing Centre HxWxD (mm)	Min/Box
RS254SE	25Amp 4P Rotary Isolator	4	25A	415v	IP54	152 x 105 x 85	80 x 25	1/20
RS324SE	32Amp 4P Rotary Isolator	4	32A	415v	IP54	220 x 143.5 x 85	107 x 86	1/25
RS404SE	40Amp 4P Rotary Isolator	4	40A	415v	IP54	220 x 143.5 x 85	107 x 86	1/10
RS634SE	63Amp 4P Rotary Isolator	4	63A	415v	IP54	220 x 143.5 x 85	180 x 100	1/25
RS1004SE	100Amp 4P Rotary Isolator	4	100A	415v	IP54	190 x 280 x 130	160 x 172	1/5
RS1254SE	125Amp 4P Rotary Isolator	4	125A	415v	IP54	190 x 280 x 130	160 x 172	1/5



## SWITCHES

### 440v Industrial Switch Isolators & Switch Fuses TPN



#### Cable Size / Max Thickness

Load	Cable (Terminal Capacity)	Terminal Hole
20A	6mm <sup>2</sup>	1.1mm
32A	10mm <sup>2</sup>	1.5mm
63A	35mm <sup>2</sup>	1.5mm
100A	70mm <sup>2</sup> & Neutral 50mm <sup>2</sup>	1.6mm
160A	70mm <sup>2</sup> & Neutral 50mm <sup>2</sup>	1.6mm

- Complies to low voltage directive 72/23/EEC as amended by directive 93/68/EEC
- Low Voltage switch gear and control gear Part 3 Switches, Switch Disconnecter & Fuse combination unit
- 415v-50Hz, three phase - Triple pole & neutral (4 pole)
- Material - Enclosure sheet steel , Chrome Handle (except 16A & 100A)
- Terminal & Link - Copper Moving contact
- Fuse Base - Ceramic Terminal
- Colour - Dark Grey
- Lockable Chrome handle up to 63A and 100A/160A Black with lockable handle in "off position"
- Adequate knockouts provided on each end
- Adequate earthing facility with earthing cover for added protection
- Method of Operation - Independent Manual
- Available in 20,32,63,100 & 160Amps
- Manufactured under Quality Management system based on IS9001
- Fully guaranteed for one year, switch fuse supplied with fuses, all components used are to the highest specifications
- Fuses compliant to BS88 Part 2



SD20



SD32



SD100



SF63



SF160

### Industrial Switch Isolator 415v - Sheet Steel Enclosure Dark Grey Colour - Switch TPN

Code	Load	Rated Voltage	Input Voltage	Output Voltage	Rated	Knockouts (mm)	Poles	Construction Material	Dimensions HxVxD (mm)	Min/Box
SD20	20A	440vA	415v-50Hz	440v	IP41	2x20 1x25	TPN	Sheet Steel	200 x 159 x 161	1
SD32	32A	440vA	415v-50Hz	440v	IP41	2x20 1x25	TPN	Sheet Steel	267 x 159 x 141	1
SD63	63A	440vA	415v-50Hz	440v	IP41	2x25 1x32	TPN	Sheet Steel	307 x 235 x 141	1
SD100	100A	440vA	415v-50Hz	440v	IP41	2x25 1x32	TPN	Sheet Steel	400 x 273 x 245	1
SD160	160A	440vA	415v-50Hz	440v	IP41	2x25 1x32	TPN	Sheet Steel	400 x 273 x 245	1

### Industrial Switch Fuse 415v TPN Sheet Steel Enclosure Dark Grey Colour made to BS EN60947-3

#### Fuses BS88 - part 2 made to BS EN60947-3

Code	Load	Rated Voltage	Input Voltage	Output Voltage	Rated	Knockouts (mm)	Poles	Construction Material	Dimensions HxVxD (mm)	Fuse	Min/Box
SF20*	20A	440vA	415v-50Hz	440v	IP41	2x20 1x25	TPN	Sheet Steel	220 x 205 x 95	CNIT20	1
SF32*	32A	440vA	415v-50Hz	440v	IP41	2x20 1x25	TPN	Sheet Steel	267 x 159 x 141	CNIT32	1
SF63*	63A	440vA	415v-50Hz	440v	IP41	2x25 1x32	TPN	Sheet Steel	307 x 235 x 141	CNIT63	1
SF100*	100A	440vA	415v-50Hz	440v	IP41	2x25 1x32	TPN	Sheet Steel	400 x 273 x 245	CTCP100	1
SF160*	160A	440vA	415v-50Hz	440v	IP41	2x25 1x32	TPN	Sheet Steel	480 x 273 x 245	CTCP160	1

\*Supplied with fuses separately

Made to EN60947-3: 1992 /A1-1995 and A2-1997



TCS2

Suitable for use in commercial & industrial environments

## CONTROL

Contactors / DOL Starters & Thermal Overloads

### Push Button Control Stations

- IEC144, 240v 50Hz, UKCA, CE, IP65
- Insulated Enclosure - Grey Colour (fixed with 4 screws)
- Made out of 22mm Hole Push Buttons. Contacts Type 1A1B
- Push Button with Flat Head and Aluminium Base
- Emergency Stop Stations have Mushroom Head and Key Operated has Yellow Enclosures
- Supplied with Knockouts (20mm)



TCSOFF

TCSON

TCSL



TCSML

TCS

TCSL

### 2 Gang IEC144, UKCA, CE (IP65)

Code	Description	Load	Voltage	Rated	Mounting	Dimensions (mm)	Min/Box
TCS2	2 Gang - On/Off Push Button Red, Green - Switch (B2BF)	n/a	240v	IP65	22mm	128.5 x 77 x 84	1

### 1 Gang IEC144, UKCA, CE (IP65)

Code	Description	Load	Voltage	Rated	Mounting	Dimensions (mm)	Min/Box
TCSOFF	Red Push Button - Off (BFR1)	3A	240v	IP65	22mm	84.5 x 77 x 83.5	1
TCSON	Green Push Button - On (BFG2)	n/a	240v	IP65	22mm	84.5 x 77 x 83.5	1
TCS	Red Mushroom Push Button - Stop (BMR3)	120A	240v	IP65	22mm	81 x 78 x 92	1
TCSML	Red Mushroom Push Button - Lock (BKR3)	120A	240v	IP65	22mm	81 x 78 x 92	1

### Press to Lock - Twist to Release (IP65)

Code	Description	Load	Voltage	Rated	Mounting	Dimensions (mm)	Min/Box
TCSL	Yellow Colour Case, Key Lock (KMR3) Mushroom Stop Button	120A	240v	IP65	22mm	81 x 78 x 92	1
TCSL	2 Position On/Off Black Switch (S2B4) 240v	n/a	240v	IP65	22mm	84.5 x 77 x 98	1



TEW16A6

TEW11A9



TEW11A6

TEWPL

#### DOL Direct On-Line Starters (IP65) without Thermal Overload

- To IEC 947-3 Degree, TÜV-GS, UKCA, CE IP65
- Moulded Enclosure Off White Colour On Off and Indicator
- Dimension: -174x104x124mm
- Supplied without Thermal Overload
- Auxiliary contacts available
- Coils available in 240v and 110v

11 Series	Starters	Coil
Available In	Rating (12Amp Rating) (16Amp Rating)	Voltage 440v & 240v 440v & 240v
Fixing Centre	150mm Apart (Length Wise)	80mm Apart (Width Wise)



#### DOL Enclosures & Accessories

- Conforms to IEC947-7-1
- Clip On Terminal Connectors End Cap & Din Rail
- Housing made out of unbreakable high strength Polyamide 6.6
- Flame Retardant up to UL94V-2
- Operating Voltage 740v AC/DC
- Working Temperature: -30°C to 100°C
- Universal foot type connection can be mounted on either On Din Rail 35x7.5mm or C Type Channel 32mm
- High quality copper alloy with excellent surface protection and provide minimum power loss
- Available in Grey

#### DOL Direct On-Line Starters

Code	Description	Load	Voltage	Rated	Mounting	Type	Phase	Dimensions (mm)	Min/Box
TEW11A9	3 Phase AC3 - 5.5kW 7.5HP	12A	415v	IP65	80 x 150mm	1NO	1 & 3	178 x 105 x 123.5	1
TEW11A6	Single Phase AC3 - 3kW 4HP	12A	240v	IP65	80 x 150mm	1NO	1 & 3	178 x 105 x 123.5	1
TEW16A9	3 Phase AC3 - 7.5kW 10HP	16A	415v	IP65	80 x 150mm	1NO	1 & 3	178 x 105 x 123.5	1
TEW16A6	Single Phase AC3 - 4kW 5.5HP	16A	240v	IP65	80 x 150mm	1NO	1 & 3	178 x 105 x 123.5	1

#### DOL Enclosures & Accessories

Code	Description	Rated	Dimensions (mm)	Min/Box
TEWE	Enclosure with Contact Block	IP65	178 x 105 x 123.5	1
TEWPL	Enclosure Plain TES21 for TC16 + TC11	IP65	173 x 105 x 123.5	1
TEL2109	"On" Blanking Plate for TEW Series		42 x 42 x 6	1
TEL2110	"Off" Blanking Plate for TEW Series		42 x 42 x 6	1



- EN60947-3, TÜV-GS, UKCA, CE. Rated Insulated Voltage 600v
- Suitable for DIN Rail or panel mounting
- Manufactured in ISO9002 factory to the highest standard
- Mechanical Life - 5 millions operations
- Electrical Life - 1 million operations magnetic contactors
- Coil choice of 240v (A6) or 415v (A9) - 24v (A7) or 110v (A5)
- Rated capacity based on AC3, 3 Phase 230VAC
- Additional contacts available
- Coils available in 240v, 110v ans 415v

Suitable for use in commercial & industrial environments



## CONTROL

Contactors/Overload Relays

UK CA CE TÜV

### Contactors complete with fitted Coil and DIN Rail - mountable at the stated voltage - 3 Phase

Code	Load	Voltage	Wattage	Mounting	Type	Phase	Dimensions LxHxW (mm)	Min/Box
TC11A6	4HP	12Amp	240v	3kW	35 x 47mm	1NO	1 8 3 81.5 x 45.5 x 69.5	1
TC16A6	5.5HP	16Amp	240v	4kW	35 x 47mm	1NO	1 8 3 81.5 x 45.5 x 69.5	1
TC11A9	7.5HP	12Amp	415v	5.5kW	35 x 47mm	1NO	1 8 3 81.5 x 45.5 x 69.5	1
TC16A9	10HP	16Amp	415v	7.5kW	35 x 47mm	1NO 1NC	1 8 3 81.5 x 45.5 x 69.5	1
TC30A6	10HP	30Amp	240v	7.5kW	n/a	1NO 1NC	1 8 3 105 x 71.5 x 99.5	1
TC40A6	15HP	44Amp	240v	11kW	n/a	1NO 1NC	1 8 3 104 x 71.5 x 95	1
TC30A9	20HP	30Amp	415v	15kW	n/a	1NO 1NC	1 8 3 105 x 71.5 x 99.5	1
TC40A9	30HP	44Amp	415v	22kW	n/a	1NO 1NC	1 8 3 104 x 71.5 x 95	1
TC60A6	25HP	68Amp	240v	19kW	n/a	1NO 1NC	1 8 3 115 x 111 x 111.5	1
TC60A9	50HP	68Amp	415v	37kW	n/a	1NO 1NC	1 8 3 115 x 111 x 111.5	1

### Contactors Coils - mountable at the stated voltage - 3 Phase

Code	Description	Load	Dimensions LxHxW (mm)	Min/Box
TCC11-6	Coil TC11/16 240v	240vAC	61 x 37 x 39	1
TCC11-9	Coil TC11/16 415v	415vAC	61 x 39 x 38.5	1
TCC11-7	Coil TC11/16 24v	24vAC	63 x 39 x 39	1
TCC11-5	Coil TC11/16 110v	110vAC	64 x 39 x 39	1
TCC30-6	Coil TC30/40 240v	240vAC	82.5 x 55 x 37	1
TCC30-9	Coil TC30/40 415v	415vAC	84 x 56 x 37	1
TCC30-7	Coil TC30/40 240v	24vAC	81.5 x 56 x 37.5	1
TCC30-5	Coil TC30/40 110v	110vAC	84.5 x 56 x 37.5	1
TCC60-6	Coil for TC60 240v	240vAC	51 x 43 x 31	1
TCC60-9	Coil for TC60 415v	415vAC	55.5 x 43 x 31	1



#### Features & Benefits

- IEC 947-3, TÜV-GS, UKCA, CE
- Available In 2 Series:-  
Series 11 Suitable for TC11 & TC16 Contactor
- Coils Series 30 Suitable for TC30 & TC40 Series Contactor
- Available In:- 24v - Suffix 7 / 110v - Suffix 5 / 240v - Suffix 6 / 440v - Suffix 9

To order a 16A 110v contactor with 5A overload and 2 extra contacts, you will need to order the following:

TC16A6 or TC16A9 (contactor) + TCC115 (110v Coil) + THR135 (overload) + TCF211 (contactor block)



#### Thermal Overload Relays 11A - 16A Series TC11 & TC16

Code	Amps	Thermal Overload for	Dimensions LxHxW (mm)	Min/Box
THR130.6	0.48 - 0.72A	TC11 & TC16	82 x 44 x 60.5	1
THR131	0.8 - 1.2A	TC11 & TC16	82 x 44 x 60.5	1
THR131.8	1.4 - 2.2A	TC11 & TC16	82 x 44 x 60.5	1
THR132.8	2.2 - 3.4A	TC11 & TC16	82 x 44 x 60.5	1
THR133.6	2.8 - 4.2A	TC11 & TC16	82 x 44 x 60.5	1
THR135	4 - 6A	TC11 & TC16	82 x 44 x 60.5	1
THR136.5	5 - 8A	TC11 & TC16	82 x 44 x 60.5	1
THR139	7 - 11A	TC11 & TC16	82 x 44 x 60.5	1
THR1315	12 - 18A	TC11 & TC16	82 x 44 x 60.5	1

#### Thermal Overload Relays 30A - 40A, Series TC30 & TC40

Code	Amps	Thermal Overload for	Dimensions LxHxW (mm)	Min/Box
THR3315	12 - 18A	TC30/35 & 40	92.5 x 70 x 73.5	1
THR3323	20 - 26A	TC30/35 & 40	92.5 x 70 x 73.5	1
THR3333	28 - 38A	TC30/35 & 40	92.5 x 70 x 73.5	1
THR3340	32 - 48A	TC30/35 & 40	92.5 x 70 x 73.5	1

#### Auxiliary Contact Blocks & Mechanical Interlock

Code	Description	Type	Thermal Overload for	Dimensions LxHxW (mm)	Min/Box
TCF211	Contact Block	1N/O, 1N/C	n/a	50 x 39.5 x 25.5	1
TCF422	Contact Block	2N/O, 2N/C	n/a	47 x 39 x 44.5	1
TCL1	Mechanical Interlock	n/a	TC11 - TC21	74 x 62 x 19.5	1



Suitable for use in commercial & industrial environments

SE1286

## ENCLOSURES

Steel Enclosures - Light Grey (IP65)

### Steel Enclosures IEC BSEN RAL 7032

Code	Description	Thickness	No. Locks	Dimensions LxHxW (mm)	Min/Box
SE1286	Steel Enclosure	1.5	1	300 x 200 x 150	1
SE12126	Steel Enclosure	1.5	1	300 x 300 x 15	1
SE16126	Steel Enclosure	1.5	1	400 x 300 x 150	1
SE16128	Steel Enclosure	1.5	1	400 x 300 x 200	1
SE20128	Steel Enclosure	1.5	1	500 x 300 x 200	1
SE16168	Steel Enclosure	1.5	1	400 x 400 x 200	1
SE20168	Steel Enclosure	1.5	1	500 x 400 x 200	1
SE24168	Steel Enclosure			600 x 400 x 200	1
SE241610	Steel Enclosure	1.5	1	600 x 400 x 250	1
SE24208	Steel Enclosure	1.5	1	600 x 500 x 200	1
SE24248	Steel Enclosure	1.5	1	600 x 600 x 200	1
SE242412	Steel Enclosure	1.5	1	600 x 600 x 300	1
SE322412*	Steel Enclosure	1.5	1	800 x 600 x 300	1
SE32248*	Steel Enclosure	1.5	1	800 x 600 x 200	1
SE482412*	Steel Enclosure	2	3	1200 x 600 x 300	1
SE483212*	Steel Enclosure	2	3	1200 x 800 x 300	1

- Enclosure and Door Manufactured from 1.5mm sheet steel, 2.0mm for doors 1000mm & 1200mm
- Mounting Plate Manufactured from 2.5mm Sendzimir Zinc-Plated Steel
- Enclosure and Door painted RAL7032 textured Polyester Powder
- IP65 protection (NEMA Type 4)

#### Supply Includes:

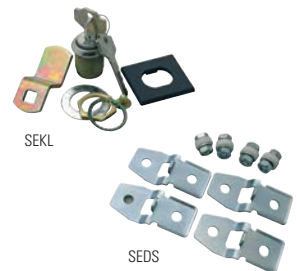
- Box with standard lock
- Mounting Plate
- Gland plate/s with sealing gasket
- 2 Door Rails screwed to door
- Mounting accessories
- Packed in heavy duty carton

### Accessories

Code	Description	Dimensions LxHxW (mm)	Min/Box
SEWMB	Wall Mounting Bracket	n/a	1
SEKL	Key Lock	n/a	1
SEDS	Door Stop	n/a	1

Note: All steel enclosures supplied with back Mounting Plate.

\*Large size to order only, also stainless steel available POA



## DIN RAIL

### DIN Rail - HAT Type & Clip On Connector Terminals



STDL35

#### Features & Benefits

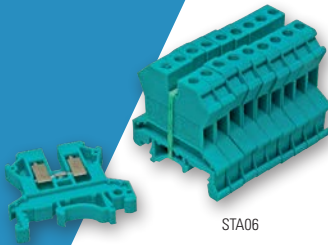
- EN60947-3, TÜV-GS, UKCA, CE. Rated insulated voltage 600v
- Suitable for DIN Rail or Panel Mounting
- Manufactured in ISO9002 factory to the highest standard
- Mechanical Life - 5 millions operations
- Electrical Life - 1 million operations
- Magnetic Contactors
- Choice of either Coil 240v (A6) or 415v (A9)
- Rated capacity based on AC3, 3 Phase 230v AC

#### DIN Rail - HAT Type

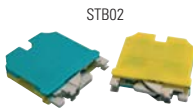
Code	Description	Dimensions (mm)
STDL35	35x7.5mm DIN Rail 35 - Slotted	35 x 7.5 x 1000
STEC06/10GRN	750v End Plate	
STEL35GRY	2.5mm <sup>2</sup> - 35mm <sup>2</sup> End Clamp	

#### Dual Mounting DIN Rail 35mm or "C" Channel 32mm IEC947-1 VDE Approved

- Conforms to IEC947-7-1
- Clip On Terminal Connectors End Cap & Din Rail
- Housing made out of unbreakable high strength Polyamide 6.6
- Flame Retardant up to UL94V-2
- Operating Voltage 740v AC/DC
- Working Temperature: -30°C to 100°C
- Universal foot type connection can be mounted on either On Din Rail 35x7.5mm or C Type Channel 32mm
- High quality copper alloy with excellent surface protection and provide minimum power loss
- Available in Grey or Green (please add colour after the code)



STA06



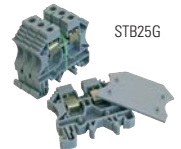
STB02



STA10



STA10G



STB25G

Grey Code	Green Code	Description	Strand Size (mm)	End Plate	Stripping Length (mm)	Torque (NM)	Size (mm) <sup>2</sup>	Amps	Dimensions LxHxW (mm)	Min/Box
STB02GRY	STB02GRN	750v Clip On	2.5-4	STEC02	9	0.35	2.5	25A	42.5x42	10/100
STA06GRY	STA06GRN	750v Clip On	4-6	STEC06	11	0.6	6	40A	42.5x47	10/100
STA10GRY	STA10GRN	750v Clip On	6-10	STEC06	11	1.1	10	55A	42.5x47	10/100
STA16GRY	STA16GRN	750v Clip On	10-16	STEC16	13	1.4	16	80A	42.5x54	10/100
STB25GRY	STB25GRN	750v Clip On	25-35	STEC25	17	2	25	100A	43x56	10/100
STB35GRY	STB35GRN	750v Clip On	35-50	STEC35	18	2.5	35	140A	43x59	10/100

N.B. Connector terminals are available in two colours. Housing material Polycarbonate 6.6 (high strength unbreakable) CE UL94 (flame retardant) Fits Channel or DIN Rail Mounting.

\*Minimum order quantity: 10

Available in GRY = Grey & GRN = Green & End Plate & End Clap 30° C to 100° C

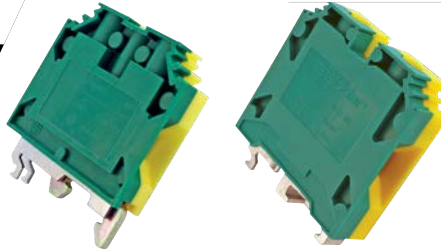
Metal components high area quality copper alloy with excellent surface protection, minimum power loss conforms to international standard IEC947-7-1.

## Earth Terminal Blocks & DIN Rail - End Plates & End Clamp

- Conforms to IEC947-7-1
- Clip On Terminal Connectors End Cap & Din Rail
- Housing made out of unbreakable high strength Polyamide 6.6
- Flame Retardant up to UL94V-2
- Operating Voltage 740v AC/DC
- Working Temperature:- 30°C to 100°C
- Universal foot type connection can be mounted on either On Din Rail 35x7.5mm or C Type Channel 32mm
- High quality copper alloy with excellent surface protection and provide minimum power loss
- Available in Grey or Green (please add colour after the code)



## DIN RAIL



SGT10GY

SGT35GY



## Green/Yellow Earth Terminal Blocks

Code	Description	Min/Box
SGT4GY	2.5 - 4mm <sup>2</sup> Green/Yellow Earth Terminal Block	10/100
SGT10GY	6 - 10mm <sup>2</sup> Green/Yellow Earth Terminal Block	10/100
SGT35GY	16 - 25mm <sup>2</sup> - 35mm <sup>2</sup> Green/Yellow Earth Terminal Block	10/100

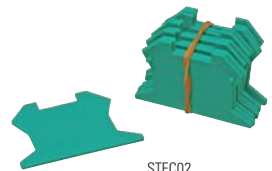
\*Minimum order quantity: 10

## DIN Rail - End Plates & End Clamp for Connector Terminal

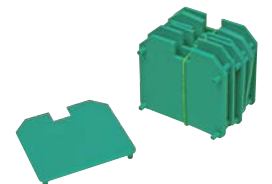
Grey Code	Green Code	Description	Min/Box
STEC02GRY	STEC02GRN	2.5mm <sup>2</sup> End Cover to fit STB02 to cover live parts	10/100
STEC6/10GRY	STEC6/10GRN	6/10mm <sup>2</sup> End Cover to fit STA06 or STA10 to cover live parts	10/100
STEC16GRY	STEC16GRN	16mm <sup>2</sup> End Cover to fit STA16 to cover live parts	10/100
STEC25GRY	STEC25GRN	25mm <sup>2</sup> End Cover to fit STB25 to cover live parts	10/100
STEC35GRY	STEC35GRN	35mm <sup>2</sup> End Cover to fit STB25 to cover live parts	10/100

N.B. Available in two colours, GRY = Grey & GRN = Green.  
Please add colour after the code for Connector Terminals & End Plate.

\*Minimum order quantity: 10



STEC02

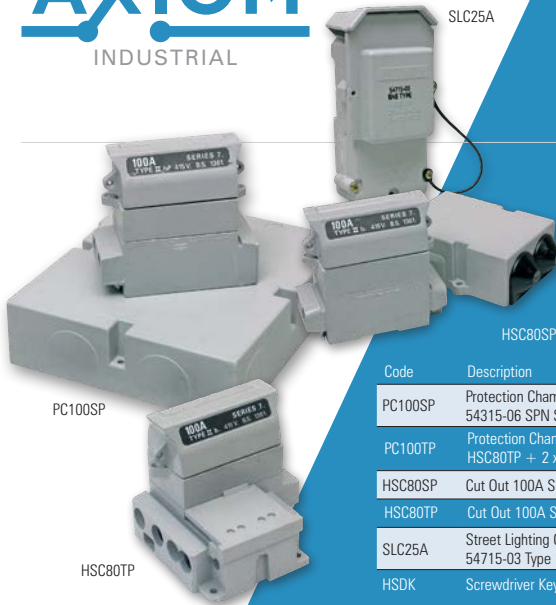


STEC35



## PROTECTION

Street Lighting & House Service Cut Out to BS7657



- To BS7654(1997)
- SNE (separate Terminal for Neutral and Earth Connection)
- Terminal Capacity:- 16Amp Copper (SWA)
- Slim Line compact design
- Retaining Strap prevents carrier falling into the column base
- Made out of high quality GRP - Grey Colour
- Dimensions:- 145.5x73.9x56.9mm

Code	Description	Dimensions (mm)	Min/Box
PC100SP	Protection Chamber 54315-06 SPN Set for 1 x HSC80TP	n/a	1/10
PC100TP	Protection Chamber 54315-49 TPN Set for 1 x HSC80TP + 2 x HSC80SP	n/a	1/10
HSC80SP	Cut Out 100A SP 54132-04	100x90	1/10
HSC80TP	Cut Out 100A SPN 54138-12	200x90	1/10
SLC25A	Street Lighting Cut Out 25A 54715-03 Type 1 SNE "LST" Fuse	145x74x57	1/10
HSDK	Screwdriver Key Insulated Hex Head	n/a	n/a

NEW

### Connector Blocks Single Pole & Double Pole

- Slotted Terminals Screw Fitted 60A SPN
- Made from high quality compound
- Can accept up to 5 Copper Conductors
- Separate Phase and Neutral Compartments

Dimensions:	Type	Dimension HxVxD
	60A DP	86x48.5x44mm
	100A SP	65x50x50mm



Code	Description	Min/Box
CB100SP	100Amp SP 5 x 35mm <sup>2</sup>	1/10
CB100SPN	100A Single Pole & Neutral Connector Block	1/10

### Industrial HRC Fuses BS88 - IE269 440v 80kA A1 Type Fuse Links Off Centre Tag

FC  
44.5mm  
1 3/4"

Code	Type	Fixing Centre (mm)	Length (mm)	Dia. (mm)	Min/Box
CNIT2	2Amp	44.5	34.6	13.8	20
CNIT4	4Amp	44.5	34.6	13.8	20
CNIT6	6Amp	44.5	34.6	13.8	20
CNIT10	10Amp	44.5	34.6	13.8	20
CNIT16	16Amp	44.5	34.6	13.8	20
CNIT20	20Amp	44.5	34.6	13.8	20
CNIT32	32Amp	44.5	34.6	13.8	20

### HRC Fuse Links Off Centre Tag - A2 Type

FC  
73.5mm  
2.7/8"

Code	Type	Fixing Centre (mm)	Length (mm)	Dia. (mm)	Min/Box
CTIA2	2Amp	73.5	35.5	21	10
CTIA4	4Amp	73.5	35.5	21	10
CTIA6	6Amp	73.5	35.5	21	10
CTIA10	10Amp	73.5	35.5	21	10
CTIA16	16Amp	73.5	35.5	21	10
CTIA20	20Amp	73.5	35.5	21	10
CTIA32	32Amp	73.5	35.5	21	10

\*Please refer to the Fuse Comparison Chart at the back of the catalogue.

## Features & Benefits

- To BS7654(1997)
- SNE (separate Terminal for Neutral and Earth Connection)
- Terminal Capacity:- 16Amp Copper (SWA)
- Slim Line compact design
- Retaining Strap prevents carrier falling into the column base
- Made out of high quality GRP - Grey Colour



## FUSES

HRC Fuse Links KEMA Tested to BS88

### Fuse Links Off Centre Tag - A3 Type

Code	Type	Fixing Centre (mm)	Length (mm)	Dia. (mm)	Min/Box
CTIS40	40Amp	73.5	54.5	21	10
CTIS50	50Amp	73.5	54.5	21	10
CTIS63	63Amp	73.5	54.5	21	10

FC  
73.5mm  
2.7/8"

### Fuse Links Off Centre Tag - A4 Type

Code	Type	Fixing Centre (mm)	Length (mm)	Dia. (mm)	Min/Box
CTCP80	80Amp	94	58.5	21	6
CTCP100	100Amp	94	58.5	21	6

FC  
94mm  
3.11/16"

### Fuse Links Central Tag - B2 Type

Code	Type	Fixing Centre (mm)	Length (mm)	Dia. (mm)	Min/Box
CTF125	125Amp	111	47	31	6
CTF160	160Amp	111	47	31	6
CTF200	200Amp	111	47	31	6

FC  
111mm  
4.3/8"

### Off Set Blade Tag Fuses - F1 Type

Code	Type	Ref F1	Length (mm)	Dia. (mm)	Min/Box
CNS2	2Amp	F1	58.5	13.8	20
CNS4	4Amp	F1	58.5	13.8	20
CNS6	6Amp	F1	58.5	13.8	20
CNS10	10Amp	F1	58.5	13.8	20
CNS16	16Amp	F1	58.5	13.8	20
CNS20	20Amp	F1	58.5	13.8	20
CNS32	32Amp	F1	58.5	13.8	20

FC  
57mm  
2.1/4"

### HRS Consumer Unit Fuses to BS1361

Code	Type	Colour	Dimensions (mm)	Min/Box
CLA5	5Amp	White	23 x 6.35	10
CLC15	15Amp	Blue	26 x 10.32	10
CLC20	20Amp	Yellow	26 x 10.32	10
CLD30	30Amp	Red	29 x 12.7	10
CLK45	45Amp	Green	35 x 16.67	10

### Fuses Link for Street Lighting Cut Outs

Code	Type	Fixing Centre (mm)	Dimensions (mm)	Min/Box
CLST2	2Amp	38	-	10
CLST4	4Amp	38	-	10
CLST6	6Amp	38	-	10
CLST10	10Amp	38	-	10
CLST16	16Amp	38	-	10
CLST20	20Amp	38	-	10
CLST25	25Amp	38	-	10
CLST32	32Amp	38	-	10

FC  
38mm



**CED**  
ELECTRICAL  
GROUP

44-48 FRESHWATER ROAD,  
DAGENHAM, ESSEX RM8 1RX (UK)  
020 8503 8500  
020 8503 8900  
[www.cedelectrical.co.uk](http://www.cedelectrical.co.uk)  
[sales@cedelectrical.co.uk](mailto:sales@cedelectrical.co.uk)